

Restoration of 24 focuses on the controllers

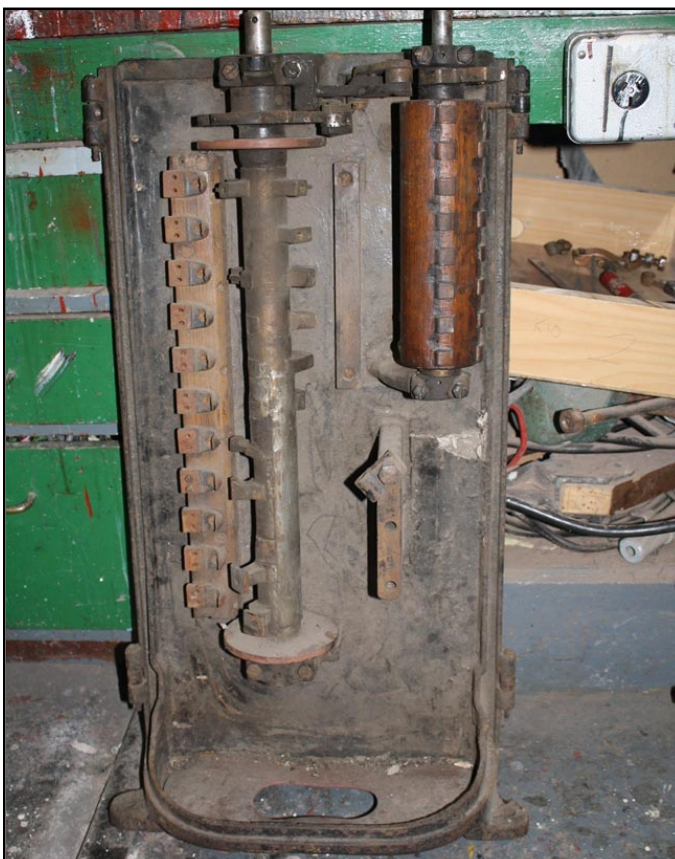
JONATHAN DAY, K10 project leader, has been working away.

AS PART OF the 24 restoration we needed to restore two controllers. 24 uses 'K10' controllers, the same controllers as number 1, 26, and 152. Because of the number of these controllers being used we decided to restore the three controllers we had around the tram barn. Two of the controllers will be used for 24 once complete plus one spare unit in case we have a fault with one currently in

service, or we want to restore one currently in service without taking the tram out of service for an extended period of time.

The three controllers were in varying degrees on 'incompleteness' but all required a full strip down, repainting and replacement of the backing insulation.

The controllers were missing
to page 2>>



Above: K10 controller in original condition.

Top right: A newly made controller finger ready to be installed (19 March)

Photos: Jonathan Day

Coming events

NOVEMBER MEETING

Our next social evening will be on the **21 November** and is to be combined with the CRS. We will meet at the tram barn and be ready to leave for the village by tram at 7.30pm sharp. Anyone who is late will need to find their own way down to the railway station in the village. The Railway Society will supply the supper with the usual \$2 donation.

MEETING OF RAIL GROUPS' ANNUAL CHRISTMAS BBQ

This year it is Weka Pass Railway's turn to host the annual Christmas get-together of the local rail heritage groups. Members are invited to a BBQ to be held at Waipara at Weka Pass Depot if fine (If wet at the Railway station) on Saturday 1 December starting at 4.00pm.

FULL DETAILS PAGE 4

Next work party

The next work party is scheduled for **Saturday 17 November 2012**. Formal work parties are held every **third Saturday of the month** and Alan Roi provides a cooked midday meal. There are also activities every **Saturday** and on **Monday evenings**.

Editorial address: Joe Pickering, P. O. Box 17, Woodend, North Canterbury 7641. Phone 03 312 2578. Email jpickering@clear.net.nz.

Message from the president



TO ALL MEMBERS AND FRIENDS.

We recently received a letter from our solicitor asking us to examine documents relating to the "Land Deal". After checking them we are satisfied they accurately reflect what was agreed in relation to the Ferrymead subdivision. After what I have been told has been a very long time could this finally be settled. Watch this space.

The Ferrymead Trust held its AGM on Monday 29 October with no change to the executive. The General Manager presented his report and indicated visitor numbers and education trips where on the increase again after a post earthquake low. This all bodes well for our future.

I would like to welcome our latest new member Bruce McNeill who is able to work week days and is helping Murray Sanders with electrical and mechanical work.

A start has been made on extending the traverser into the car park and this work will include repairing the quake damaged walls on the existing traverser pit.

A letter of thanks is being sent from the Management Committee but I would like to take this opportunity to personally thank Rose and Barry Marchant for all the effort they put into organising and running the wedding trams. They set a very high standard which has given us a good reputation.

Graeme Bewlorthy

President

24's controller *from page1*

parts so a lot needed replacing. Once we got into stripping the controllers down it was discovered that in addition to parts missing a few things like the 'speed rolls' had been modified in the previous life and were unusable.

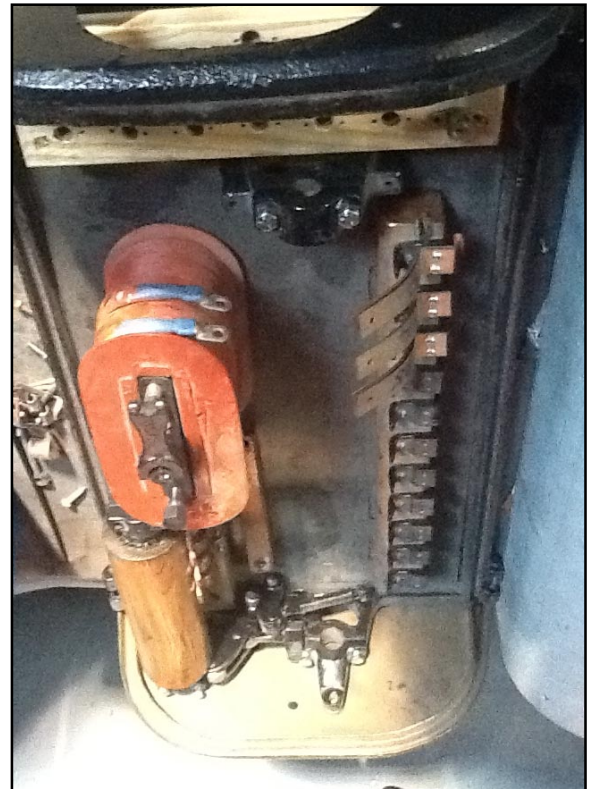
To date all three controllers have been stripped down, repainted, revarnished and the parts we have have been reinstalled.

We have had to source a number of new parts; for example we had to source new copper work (from Little Metals), a new blow-out coil (ABB), wiring and electrical vanish from Redpaths and we are awaiting word from our pattern makers with patterns to get a number of metal parts cast.

We have recently got the controller bases back for getting new controller case fronts made. During the time the bases were away I was working on creating three sets of new controller fingers. Once completed we will mount inch wide half round copper to contact with

the speed rolls (thanks to Mike Lawson for arranging and cutting the half round for us!).

I'd like to take the chance to say thank you to dad and others who are assisting me in restoring these controllers.



Top: controller after being stripped down, painted and reinstated (6 November).

Above: Controllers and the new cases (6 November).

Photos: Jonathan Day

THS photo archives available to members

ALLEN HARBROW has been beavering away with a scanner and categorising photos

I have been working on a project where I have scanned over 15 GB of THS photographs, equal to over 2,500 photographs. These have been categorised under various headings which incorporate individual photo sets in .tif format such as:

- Christchurch Tramway Board operations with subsets for Brill, Boon, Californian combo, Hills, and Yank trams, CTB buses, trailers, horse trams and works vehicles,
- buses...RedBus, Trolleys,
- Ferrymead photos with subsets for early days, buses, trams, steam tram, trolleys, tram recovery, trailer recovery,
- Dunedin trams and cable cars,
- Invercargill trams.

These old and historic photographs are available to THS members at a cost of \$10.00 per subset

for the first and \$5.00 for each additional subset. This is to cover admin and DVD production costs. Many of the subsets contain 50 photos or more. THS Collection photographs do incorporate photos from other sources which are identified, however they are able to be used legitimately under New Zealand copyright law by members for research and personal study. However, if they are to be reproduced in any publication, permission must first be sought from the Society.

Details on what is available can be obtained from Allen Harbrow at aharbrow@clear.net.nz or on Ph 3855519 who will take orders and cut the photos to a DVD and post out to members. Payment can be made by cheque or direct to our THS account via internet. The photos can not realistically be emailed back because

the higher quality .tif format means that each photograph is 4Mb or more. Quality of the scanned photos are quite good although some of the older photos are a bit fuzzy and some faded.

There is the opportunity for members to add their tram or bus photographs to the THS collection if they so wish. Remember we are a South Island tram museum so North Island trams are out of scope. Our bus collection is mainly for ex Christchurch Tramway Board vehicles although we do have some for Midland Motorways and Days Motors who did Christchurch rural services. Our trolley collection covers all centres that operated trolleys. Old photographs of THS at Ferrymead are also of interest. Note that all relevant photos will be scanned and the originals returned to the member if so wished.



NOTICE TO ALL TRAFFIC CREWS

A reminder that the Running Sheet is used for the collection of statistical data. This is used for maintenance and statutory purposes.

- Correct tram number and correct number of trips are used for maintenance of tramcars
- First name and surname IN FULL is used to record driving time during the course of the year
- Date, start and finish times are also used to record driving time during the course of the year
- Name and hours of any relieving or trainee motorman to be noted on Running Sheet
- Whether the service is THS or Charter needs to be noted
- All of the Safety Checks need to be SIGNED off. In particular that the brakes have been tested and correctly noted i.e. air brakes signed off for an air braked car and not signed off in the rheostatic brake space. Our Safety Auditor will pick up on this!
- Track greasing to be noted in the space provided - mandatory at present on Church Corner.
- Faults and incidents are to be recorded on rear of Running Sheet. Accidents are to be reported on separate form.

INVITATION

Local railfan groups get-together

This year it is Weka Pass Railway's turn to host the annual Christmas get together of the local rail heritage groups.

Accordingly all of your members are invited to a BBQ to be held at Waipara on Saturday 1 December starting at about 4.00 pm. This date is also the 30th anniversary of the founding of our organisation. We plan to have the BBQ on the grass outside our staff room at the depot but if the weather goes against us we will probably move to Glenmark station. WPR will provide BBQ's and basic food, (sausages, bread and a few add ons). If you have any special requirements in the food department please feel free to bring your own and use our facilities to cook. Drinks are BYO. Do remember that it is an hour's drive back to Christchurch and be conscious of having a sober driver.

We look forward to seeing as many of your members as possible to help us celebrate our 30th anniversary, Christmas and our common bond.

It's a bit late to ask for an indication of numbers so we will just play it by air. Hope we get it right.

Nev Tobin

Weka Pass Railway

Trolleybuses on parade...



Photo: Dave Hansen



Photo: Dave Hansen

Wellington 103 (top) and Auckland 105 (above).