

## Tram barn appeal off to good start

Last month we announced the launch of an appeal to raise funds to provide housing for the refugee trams from the City Tramway.

Within one month nearly \$33,000 has been paid or pledged—almost one third of the target. Treasurer STEPHEN TAYLOR reports on this important project.

AS DISCUSSED in the March/April *Tracts*, the Society is undertaking an urgent fundraising appeal for funds to erect a new storage shed for trams at Ferrymead—now to be known as Tram Barn 3. The purpose of this building is initially to house the trams relocated from the City Tramway after the Earthquake—and currently deteriorating outside in the weather. After slightly less than a month, the Society has been pledged just over \$32,800 in donations towards this project and received almost \$6,300 in cash. Obviously we are still needing further funding towards our target of over \$100,000 towards this project and further contributions are welcomed. Further information on this project and progress updates can be found on the Society's website [www.ferrymeadtramway.org.nz](http://www.ferrymeadtramway.org.nz)

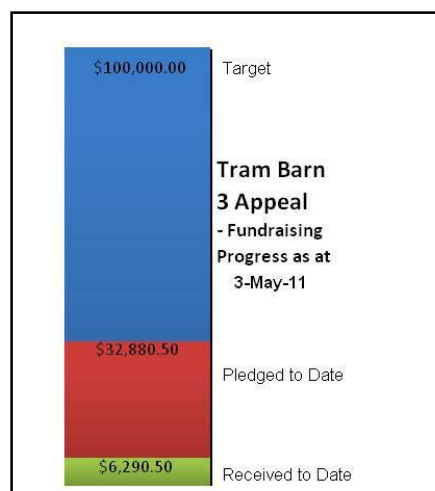
Stolenwindmill Waipara Riesling—Tasting notes: "Lean, slightly bitter grapefruit lemon finish, dry backbone giving it another three years or so maturing".

We are advised that the sauvignon blanc normally retails for \$10 per bottle and the riesling for \$12.50. We are initially offering these wines to readers of *Tracts* for \$100 per case of sauvignon blanc for \$100 per case and the riesling for \$125.00. Obviously shipping (if required) is additional, but the wine can be picked up from the Treasurer—or potentially delivered in the Christchurch area. Sale of either mixed cases or smaller than case lots will also be entertained. Please direct enquiries to the Society Treasurer—Stephen Taylor—phone 3374065 or [treasurer@ferrymeadtramway.org.nz](mailto:treasurer@ferrymeadtramway.org.nz).

### Generous donation

Thanks to a Mr Graeme Allen (who is not a Society member), the Society has been donated ten cases of wine from Waipara Vineyard "Stolen Windmill" (refer also to <http://stolenwindmill.co.nz>) as a contribution towards fundraising towards Tram Barn 3.

There are five cases of 2008 Stolenwindmill Waipara Sauvignon Blanc—Tasting notes: "Mature herbaceous crisp green fruit with hints of straw and oak and a clean fresh finish" and five cases of 2008



### Coming events

#### MEMBERS' MEETING Greg Harris and John Shanks

will entertain members with the story of their journey from France to New Zealand through the Panama Canal last year. John will provide a little local history of some of the places he visited in England and some pretty scenes of ancient trams encountered in his travels

but, by request of the ladies, not too many trams! Greg will screen a stunning video of the sea voyage and wide open spaces edited by his son Ian who is a film expert. We need say no more! It will be a show not to be missed - so be sure to come and see for yourself!

**DATE:** Wednesday 18 May 2011

**VENUE:** The Lions' Building at Ferrymead Heritage Park —enter by Gate A in Truscotts Road

**TIME:** 7.30 pm

There will be a \$2-00 charge for Phyllis's superb supper!

## Next work party

The next work party is scheduled for **Saturday 21 May 2011**. Formal work parties are held every third Saturday of the month and Alan Roi provides a cooked midday meal. There are also activities every Saturday and on Monday evenings.

**Editorial address: Joe Pickering, P. O. Box 17, Woodend, North Canterbury 7641. Phone 03 312 2578. Email [jpickering@clear.net.nz](mailto:jpickering@clear.net.nz).**

## A great start but more needed

The Society deeply appreciates the money raised for the Tram Barn 3 Appeal so far and is profoundly grateful to those who have assisted so generously.

However if we are to protect our precious assets it is essential that we get the building up as soon as possible. If you are able to assist, either with a one-off donation or drip feed, you will be materially assisting this to happen.

Payments, including by instalment, may be made directly to the Society's Westpac Bank Account number— 03- 0802-0095056-01—please use your name as a reference so that we can identify your payment. This is our preferred method of payment, but if you would like to pay by cheque or other means then that's fine by us.

If you would like to discuss this further with the Society, please contact one of the signatories below.

Graeme Belworthy

President

352 4872

president@ferrymeadtramway.org.nz

Stephen Taylor

Treasurer

337 4065

treasurer@ferrymeadtramway.org.nz

Dave Hinman

Secretary

366 4903

secretary@ferrymeadtramway.org.nz

Dave Carr

Chairman HTT

942 0364

htt@ferrymeadtramway.org.nz



Don McAra fixes the Tram Barn 3 Appeal "thermometer" to a pole at Ferrymead. The wording at the top reads "TO PROTECT CHCH'S TRAMS FROM THE WEATHER"

Photo: Dave Hinman

## Generous offer from Don McAra

Don McAra is very generously donating ten paintings for sale (one has already sold) to help raise funds for TB3. They are from his book, *Hold Very Tight Please* about New Zealand cablecars in Dunedin and Wellington. Most are framed, behind glass, and all are done in watercolour. Four of these shown below and the other five on page 4.

Don says: Purchasers out of town in New Zealand could have the work couriered to them by adding \$25 (small pieces) and \$50 (larger, over 300 x 400mm).

Purchasers overseas are asked to accept the work unframed and in a tube, but at the same cost to cover my expenses. The Treasurer wants me to handle everything and forward payment to the Society. So purchasers please pay me first, cheques to TB3, Tramway Historical Society, C/O 17 Dyers Pass Rd, Cashmere, Christchurch 8022, New Zealand. OR: Electronic Bank Transfer to Westpac 031594 0071256 00 with reference first two words of the work's title. Please allow two weeks for out of town delivery.

Don McAra has reduced the prices of these paintings

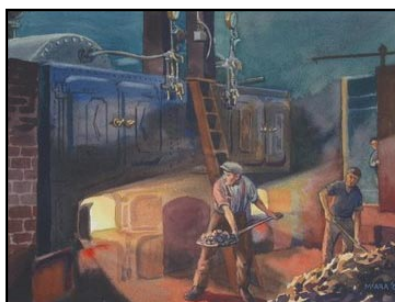
by over a half from gallery prices in the hope that they will be more accessible to those who wish to contribute to our badly needed new Tram Barn. (This would help explain the cheaper prices to those who bought the other originals from my book and paid considerably more.) *For a larger view of these pictures visit the Society's website.*

More pictures page 4

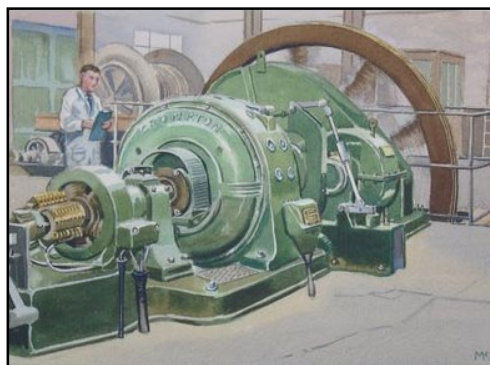


Above: *The Gripman, Roslyn line* 530 x 350 \$750

Far right: *Splicing the Cable, Roslyn Line* 350 x 530 (unframed) \$400.



Right: *Boiler Room, Roslyn line* 250 x 350 \$350



Right: *Electric Winding Motor, Mornington Power house* 230 x 350 \$150





## Birney progress



## Ferrymead back in business



TO ALL MEMBERS AND FRIENDS The "State of Emergency" has been lifted and the next stage of recovery begins. Should I say it but those quakes seem to be getting fewer and less in magnitude.

The Park is now back to normal operation with trams running on all weekends. The Roster Clerk is now looking for drivers to cover our commitment to the Park.

Some clean up is still required in places, the library, storeroom at the trolley bus barn and some tram bodies in Tram Barn 1 just to mention a few. Work on the overhead and track is ongoing to bring it back pre-quake condition. The next monthly work day where we have lunch provided is 21 May where many hands makes light work.

The need for covered and secure storage for the trams from the city is very urgent. We have plans for a three road third tram barn adjacent to the traverser where the Sydney Yank and the coke container are at present. An appeal is presently under way to raise funds for this. We have received several very generous donations from overseas as well as local and around New Zealand. This building is a must so any help money or work will be very welcome.

Finally our thoughts are with those members and friends who have suffered in the quakes. Please keep in touch with the Society. I am here for you all.

Graeme Belworthy  
President.

*Top and left: Saturday 30 April—Barry Marchant and Graeme Richardson lifting the lower part of the trolley bridge on to the roof and the "pudding basin" ventilators being fitted.*

**Photos: Roy Sinclair**



## Second Goals and Projects Meeting held

AT THE SOCIETY General Meeting on 20 April 2011, the Society met to again review and prioritise the Society's goals and projects for 2011.

The first part of the meeting was focused on updating members on recent events, particularly the need for and background to the Tram Barn 3 Appeal, progress towards this project and an updated description of the resulting building, its location and facilities.

This was followed by the review of the Society's Goals and Projects for 2011 as last updated in December 2011. The focus was on the High Priority Goals.

In addition, one new high priority project—"Tram Barn 3 project" was added, three medium priority goals/projects were promoted to high, and one—the 50th Anniversary Celebration was deemed to be complete (other than recording

of Society history which was added to another existing goal).

For each of the high priority goals/projects, there was a discussion about what the goal/project was intended to achieve, how and why. We also attempted to identify likely candidates to progress each of these high priority items. It is requested that members review the list to see which goals/projects they feel that they could contribute to, and then contact the listed convenor(s) to indicate their interest.

The updated goals/projects list has been updated on the "Projects" section of the Society website [www.ferrymeadtramway.org.nz](http://www.ferrymeadtramway.org.nz)

It is expected that there should be a further review and update of the goals/projects list later this year to review progress and provide an updated and re-prioritised list for 2012.

## More lost buildings from the tramway era

Last month we published a list, compiled by Dave Hinman, of Christchurch buildings associated with the tramway era that have been lost. DOUGLAS JOHNS responded to the invitation to contribute to this list. The editor also has some additions.

### Papanui Terminus (Route 1)

Also likely to go is the building opposite the Firestone one—has a Thai restaurant in it, and I think dates back far enough.

### Merivale (1)

Quite a few on west side likely to go.

### Carlton Corner (1 and 9)

Virtually everything except the shops on north east corner gone/will go although maybe some will stay.

### Fendalton (9)

Gone are the shops at the SW corner of Holmwood Road and Rossall Street (my old shoe repairer was in one of those).

### Sydenham (2 & 13)

A lot of buildings gone—a lot of the block south east from Wordsworth Street, Old Church NW corner Brougham Street, the old pub on west side north of Wordsworth Street plus others.

### Bealey and Colombo (4 & 16)

NE corner shops gone.

### Victoria Street (1 & 9)

Caxton Press building. The Old Geo Fry building (cnr Peterborough Street).  
*Your editor adds the following:*

### Cranford Street (4)

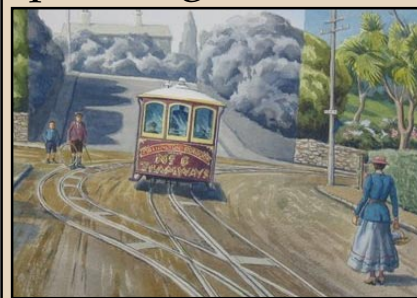
All the shops on the SE corner of Colombo Street and Edgware Road and those on the corner of Edgware Road and Cranford Street where the BP service station is now have gone. Also gone is the Edgware Supermarket which, in tramway days, was the Century Theatre, notable for the fact that all good films eventually got shown there—if you missed them in town, you'd get them later at the Century.

The old St Albans Library at the north end of Colombo Street (west side) may go.

### New Brighton (5)

The Provincial Hotel on the SE corner of Cashel Street and Stanmore Road, undergoing repairs after the September earthquake, succumbed irreparably on 22 February.

## More Don McAra paintings for sale



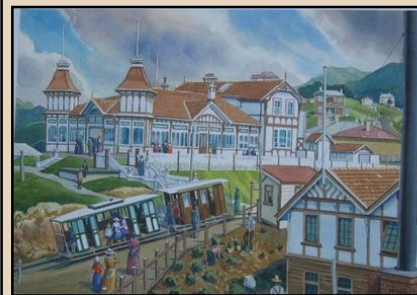
9. Elgin Road line, Mornington  
250 x 340 \$150



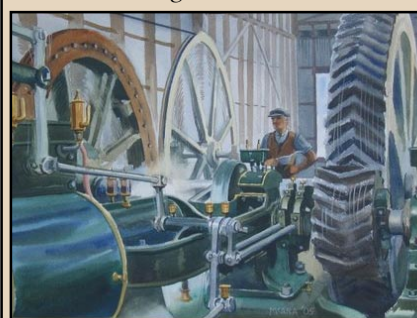
10. On the Brink, Maryhill  
Line 250 x 340 \$250



6. Kaikorai Tram Barn, Taieri Rd  
350 x 530 \$500



8. Kelburn Terminus and Power  
House, (Wellington) 350 x 530 \$500



7. Steam Winding Gear, Kaikorai line  
Power House 340 x 470 \$500